

H115/H125

**Digital Audio
Player
User's Guide**



Changing Entertainment. Again.
www.rca.com

It is important to read this instruction book prior to using your new product for the first time.

Table of Contents

Table of Contents	2
Important Information	4
End User License Agreement	6
Before You Begin	8
Unpacking Your Unit	8
Things to consider before you get started... ..	9
Computer System Requirements	9
Secure Music Download Requirements	9
Warning	9
Caution	10
Caution While Driving	10
Back up your data	10
Product Registration	10
Software Setup	11
Inserting the Included CD-ROM into CD-ROM Drive	11
Connecting to the Computer	12
Connecting to the Computer	12
Charging the Battery	13
Important Battery Information	13
Caution	13
Transferring Files to the Player	14
Transferring Files via Yahoo! Music Engine (Windows XP only)	15
Transferring Files via Windows Explorer (Drag-and-drop)	17
Disconnecting Your Player from the Computer	18
General Controls	19
Before you Begin	19
Overview of the General Controls	20
Front View	20
Top View	21
Right View	21
Navigation Display	22
Music Playback Display	23
The Navigation Menus	24
Selecting What You Want to Play	24

Table of Contents

My Selections	26
Adding Items to My Selections	26
Saving MySelections as a Playlist	26
Viewing Playlists	27
Deleting Playlists	27
Player's Menu	28
Accessing the Player's Menu	28
Navigation and Selections	28
Shuffle	29
Repeat	29
DSP	29
Profile	29
Settings	30
System Info	30
Additional Information	31
Tips and Troubleshooting	31
Check for Updates	32
Specifications	33
Hardware	33
Hard Drive	33
Software	33
Miscellaneous Specifications	33
Limited Warranty (U.S.)	34
Limited Warranty (Canada)	37

Important Information

WARNING

To reduce the risk of fire or electric shock, do not expose this product or AC charger to rain or moisture.

CAUTION

RISK OF ELECTRIC SHOCK DO NOT OPEN



This symbol indicates "dangerous voltage" inside the product that presents a risk of electric shock or personal injury.



This symbol indicates important instructions accompanying the product.

To reduce the risk of electric shock, do not remove cover (or back). No user serviceable parts inside. Refer servicing to qualified service personnel.

Battery can only be repaired or replaced by qualified service personnel.

Technical Specification

Product: Digital audio player

Brand: RCA

Model: H115/H125

Electrical Rating

DC : 3.7 V Li-polymer battery (built -in)

Importer

Comercializadora Thomson de México, S.A. de C.V.

Álvaro Obregón No. 151. Piso 13.

Col. Roma. Delegación Cuauhtémoc

C.P. 06700. México, D.F.

Telefono: 52-55-11-020360

RFC: CTM-980723-K55



RCA
H115

Equipment tested for compliance as a complete unit



RCA
H125

Equipment tested for compliance as a complete unit

Important Information

FCC Regulations state that unauthorized changes or modifications to this equipment may void the user's authority to operate it.

FEDERAL COMMUNICATIONS COMMISSION INFORMATION

This equipment has been tested and found to comply with the limits for a Class B digital device, pursuant to Part 15 of FCC Rules. These limits are designed to provide reasonable protection against harmful interference in a residential installation. This equipment generates, uses, and can radiate radio frequency energy and, if not installed and used in accordance with the instructions, may cause harmful interference to radio communications.

However, there is no guarantee that interference will not occur in a particular installation. If this equipment does cause harmful interference to radio or television reception, which can be determined by turning the equipment off and on, the user is encouraged to try to correct the interference by one or more of the following measures

- Reorient or relocate the receiving antenna.
- Increase the separation between the equipment and receiver.
- Connect the equipment into an outlet on a circuit different from that to which the receiver is connected.
- Consult the dealer or an experienced radio/TV technician for help.

This device complies with Part 15 of the FCC Rules. Operation is subject to the following two conditions: (1) This device may not cause harmful interference, and (2) this device must accept any interference received, including interference that may cause undesired operation.

In accordance with FCC requirements, changes or modifications not expressly approved by Thomson Inc. could void the user's authority to operate this product.

This device generates and uses radio frequency (RF) energy, and if not installed and used properly, this equipment may cause interference to radio and television reception.

If this equipment does cause interference to radio or television reception (which you can determine by unplugging the unit), try to correct the interference by one or more of the following measures:

- Re-orient the receiving antenna (that is, the antenna for the radio or television that is "receiving" the interference).

- Move the unit away from the equipment that is receiving interference.
- Plug the unit into a different wall outlet so that the unit and the equipment receiving interference are on different branch circuits.

If these measures do not eliminate the interference, please consult your dealer or an experienced radio/television technician for additional suggestions.

Also, the Federal Communications Commission has prepared a helpful booklet, "How To Identify and Resolve Radio TV Interference Problems." This booklet is available from the U.S. Government Printing Office, Washington, DC 20402. Please specify stock number 004-000-00345-4 when ordering copies.

This Class B digital apparatus complies with Canadian ICES-003.
Cet appareil numérique de la class B est conforme à la norme du NMB-003 du Canada

End User License Agreement

End User License Agreement

IMPORTANT-READ CAREFULLY: This End User License Agreement ("Agreement") is a legal agreement between you and Thomson Inc. ("Thomson") for the RCA Player, Device application/driver software program and associated documentation, if any ("Program").

ACKNOWLEDGMENT

BY INSTALLING THE SOFTWARE OR CLICKING ON THE ACCEPTANCE BUTTON OF THE SOFTWARE, COPYING OR OTHERWISE USING THE PROGRAM, YOU ACKNOWLEDGE AND AGREE THAT YOU HAVE READ THIS AGREEMENT, UNDERSTAND IT, AND AGREE TO BE BOUND BY ITS TERMS AND CONDITIONS. IF YOU DO NOT AGREE TO THE TERMS OF THIS LICENSE AGREEMENT, CLICK ON THE REJECTION BUTTON AND/OR DO NOT INSTALL THE SOFTWARE AND/OR DO NOT USE THE PROGRAM.

LICENSE

- a) You are granted the license (i) to use the Program on a single workstation and (ii) to make one (1) copy of the Program into any machine-readable form for backup of the Program, provided the copy contains all of the original Program's proprietary notices.
- b) You may transfer the Program and license, only as part of the Player, to another party if the other party agrees to accept the terms and conditions of this Agreement. If you transfer the Program, you must at the same time either transfer all copies to the same party or destroy any copies not transferred.

LICENSE RESTRICTIONS

- a) Except for the licenses expressly granted to you in this Agreement, no other licenses are implied.
- b) You may not (i) modify, translate, reverse engineer, decompile, disassemble (except to the extent that this restriction is expressly prohibited by law) or create derivative works based upon the Program or (ii) copy the Program, except as expressly permitted herein. You agree that you shall only use the Program in a manner that complies with all applicable laws in the jurisdictions in which you use the Program, including, but not limited to, applicable restrictions concerning copyright and other intellectual property rights.
- c) The Program may contain pre-release code that does not perform at the level of a final code release. In this case, the Program may not operate properly. Updated versions of the Program can be downloaded from www.rca.com.
- d) Thomson is not obligated to provide support services for the Program.
- e) The Program is provided with "RESTRICTED RIGHTS". Use, duplication, or disclosure by the U.S. Government is subject to restrictions as set forth in subparagraph (c)(1)(ii) of DFARS 252.227-7013, or FAR 52.227-19, or in FAR 52.227-14 Alt. III, as applicable.

TERM AND TERMINATION

- a) The license is effective on the date you accept this Agreement, and remains in effect until terminated by either party.
- b) You may terminate this license without any notice or delay, by destroying or permanently erase the Program and all copies thereof.
- c) If you use, copy, modify, or transfer the Program, or any copy, in whole or part, except as expressly provided for in this license, your license is automatically terminated.
- d) When the license is terminated, you must destroy or permanently erase the Program and all copies thereof.

WARRANTY DISCLAIMER

THE PROGRAM IS PROVIDED "AS IS" WITHOUT WARRANTY OF ANY KIND, EITHER EXPRESSED OR IMPLIED, INCLUDING, BUT NOT LIMITED TO THE IMPLIED WARRANTIES OF MERCHANTABILITY, FITNESS FOR A PARTICULAR PURPOSE, TITLE OR NON-INFRINGEMENT. THE ENTIRE RISK AS TO THE QUALITY AND PERFORMANCE OF THE PROGRAM IS WITH YOU. SHOULD THE PROGRAM PROVE DEFECTIVE, YOU (AND NOT THOMSON, ITS SUPPLIERS, ITS AFFILIATES OR ITS DEALERS) ASSUME THE ENTIRE COST FOR ALL NECESSARY REPAIR OR CORRECTION.

This exclusion of warranty may not be allowed under some applicable laws. As a result, the above exclusion may not apply to you, and you may have other rights depending on the law that applies to you.

OWNERSHIP RIGHTS

All title and intellectual property rights in and to the Program and any copies thereof are owned by Thomson or its suppliers. All title and intellectual property rights in and to the content which may be accessed through use of the Program is the property of the respective content owner and may be protected by applicable copyright or other intellectual property laws and treaties. This license grants you no rights to use such content.

LIMITATION OF LIABILITY

- a) TO THE MAXIMUM EXTENT PERMITTED BY APPLICABLE LAW, IN NO EVENT SHALL THOMSON, ITS AFFILIATES, OR ITS DEALERS BE LIABLE FOR ANY SPECIAL, INCIDENTAL, INDIRECT OR CONSEQUENTIAL DAMAGES WHATSOEVER (INCLUDING, WITHOUT LIMITATION, DAMAGES FOR LOSS OF PROFITS, BUSINESS INTERRUPTION, CORRUPTION OF FILES, LOSS OF BUSINESS INFORMATION OR ANY OTHER PECUNIARY LOSS) REGARDLESS OF CAUSE OR FORM OF ACTION, INCLUDING CONTRACT, TORT OR NEGLIGENCE, ARISING OUT OF THE USE OF OR INABILITY TO USE THE PROGRAM, EVEN IF THOMSON HAS BEEN ADVISED OF THE POSSIBILITY OF SUCH DAMAGES. BECAUSE SOME STATES AND JURISDICTIONS DO NOT ALLOW THE EXCLUSION OR LIMITATION OF LIABILITY OF CONSEQUENTIAL OR INCIDENTAL DAMAGES, THE ABOVE LIMITATION MAY NOT APPLY TO YOU.

End User License Agreement

b) YOU ASSUME RESPONSIBILITY FOR THE SELECTION OF THE APPROPRIATE PROGRAM TO ACHIEVE YOUR INTENDED RESULTS, AND FOR THE INSTALLATION, USE, AND RESULTS OBTAINED.

WINDOWS MEDIA

This version of the RCA Player (the Player) contains software licensed from Microsoft that enables you to play Windows Media Audio (WMA) files ("WMA Software"). The WMA Software is licensed to you for use with the RCA/THOMSON Portable Audio Device digital music player under the following conditions. By installing and using this version of the Player, you are agreeing to these conditions. IF YOU DO NOT AGREE TO THE CONDITIONS OF THIS END USER LICENSE AGREEMENT, DO NOT INSTALL OR USE THIS VERSION OF THE Player.

The WMA Software is protected by copyright and other intellectual property laws. This protection also extends to documentation for the WMA Software, whether in written or electronic form.

GRANT OF LICENSE. The WMA Software is only licensed to you as follows:

You may use this version of the Player containing the WMA Software only with the Portable Audio Device player.

You may not reverse engineer, decompile, or disassemble the WMA Software, except and only to the extent that such activity is expressly permitted by applicable law in spite of this limitation.

You may transfer your right to use this version of the Player only as part of a sale or transfer of your Portable Audio Device player, on the condition that the recipient agrees to the conditions in this End User License Agreement. If the version of the Player that you are transferring is an upgrade, you must also transfer all prior versions of the Player that you have which include the WMA Software.

MICROSOFT IS NOT PROVIDING ANY WARRANTY OF ANY KIND TO YOU FOR THE WMA SOFTWARE, AND MICROSOFT MAKES NO REPRESENTATION CONCERNING THE OPERABILITY OF THE WMA SOFTWARE.

The WMA Software is of U.S. origin. Any export of this version of the Player must comply with all applicable international and national laws, including the U.S. Export Administration Regulations, that apply to the WMA Software incorporated in the Player.

Content providers are using the digital rights management technology for Windows Media contained in this device ("WM-DRM") to protect the integrity of their content ("Secure Content") so that their intellectual property, including copyright, in such content is not misappropriated. This device uses WM-DRM software to play Secure Content ("WM-DRM Software"). If the security of the WM-DRM Software in this device has been compromised, owners of Secure Content ("Secure Content Owners") may request that Microsoft revoke the WM-DRM Software's right to acquire new licenses to copy, display and/or play Secure Content. Revocation does not alter the WM-DRM Software's ability to play unprotected content. A list of revoked

WM-DRM Software is sent to your device whenever you download a license for Secure Content from the Internet or from a PC. Microsoft may, in conjunction with such license, also download revocation lists onto your device on behalf of Secure Content Owners.

THIRD PARTY SOFTWARE

ANY THIRD PARTY SOFTWARE THAT MAY BE PROVIDED WITH THE PROGRAM IS INCLUDED FOR USE AT YOUR OPTION. IF YOU CHOOSE TO USE SUCH THIRD PARTY SOFTWARE, THEN SUCH USE SHALL BE GOVERNED BY SUCH THIRD PARTY'S LICENSE AGREEMENT, AN ELECTRONIC COPY OF WHICH WILL BE INSTALLED IN THE APPROPRIATE FOLDER ON YOUR COMPUTER UPON INSTALLATION OF THE SOFTWARE. THOMSON IS NOT RESPONSIBLE FOR ANY THIRD PARTY'S SOFTWARE AND SHALL HAVE NO LIABILITY FOR YOUR USE OF THIRD PARTY SOFTWARE.

GOVERNING LAW

This Agreement is governed by the laws of the State of Indiana, U.S.A. without regard to its conflict of laws.

GENERAL TERMS

This Agreement can only be modified by a written agreement signed by you and Thomson, and changes from the terms and conditions of this Agreement made in any other manner will be of no effect. If any portion of this Agreement shall be held invalid, illegal, or unenforceable, the validity, legality, and enforceability of the remainder of the Agreement shall not in any way be affected or impaired thereby. This Agreement is the complete and exclusive statement of the agreement between you and Thomson, which supersedes all proposals or prior agreements, oral or written, and all other communications between you and Thomson, relating to the subject matter of this Agreement.

Before You Begin

Dear RCA Customer,

Thank you for purchasing the RCA Digital Audio Player. This product will play open mp3 and Windows Media™ audio (WMA) content as well as content purchased from most online music download services.

After purchasing and downloading music to your PC, you are now ready to move content to your player. To transfer the music to your player, you may use Yahoo! Music Engine or the application recommended by the online music download service.

(Note: Services and applications must be Windows Media audio-compliant and support Digital Rights Management. Windows XP (SP1 or higher) required.)

Unpacking Your Unit

Your player came with everything you need to make music portable — all of the items shown below should have been packed in the box with your player.



RCA Digital Audio Player



Music Management CD
Contains software applications



Mini USB cable
Plug the small end into the USB on your player, and plug the other end into your computer's USB port. Go to page 13 for connection details.



Headphones

Explore a world of accessories! Jump on the Internet and go to www.rca.com to discover the additional accessories that are available for your player.

Illustrations contained within this publication are for representation only and subject to change.

Things to consider before you get started...

Computer System Requirements

- Pentium III 500MHz or higher recommended, running Windows ® XP SP1 (SP=Service Pack).
- Internet Explorer 4.0 or higher
- Internet access (broadband recommended)
- 100MB free hard disk space for the software
- 64MB RAM (128MB recommended)
- CD-ROM drive capable of digital audio extraction
- USB port (2.0 recommended)
- Sound card
- 16- bit color video card

Secure Music Download Requirements

- Windows XP SP1 or higher (SP=Service Pack)
- Internet Explorer 6.0 or higher
- Yahoo! Music Engine or the application recommended by the online music download service

Warning

Use of this product is for your personal use only. Unauthorized recording or duplication of copyrighted material may infringe upon the rights of third parties and may be contrary to copyright laws.

Caution

- Keep product out of direct sunlight. Exposure to direct sunlight or extreme heat (such as inside a parked car) may cause damage or malfunction.
- Do not expose to rain or moisture.

Before You Begin

Caution While Driving

Use of headphones while operating an automobile or moving vehicle is not recommended and is unlawful in some states and areas. Be careful and attentive on the road. Stop operation of the unit if you find it disruptive or distracting while driving.

Back up your data

As with any portable device that has a hard drive, you must back up the drive regularly. RCA and Thomson are not responsible for lost data.

Product Registration

Please fill out the product registration card and return it immediately. Returning this card allows us to contact you if needed.

The Music Management CD that comes with your player contains all of the necessary software components you need to make your player work properly.

These components do the following:

- enable you to transfer files from your computer to your player
- format and sort the contents, update the system files.

Inserting the Included CD-ROM into CD-ROM Drive

1. Turn on your computer and place the Music Management CD that came with your player into your computer.

IMPORTANT: Don't connect the USB cable to the PC or the player before or during the CD-ROM installation.

2. If the setup screen does not appear, double-click *My Computer*, double click your CD-ROM drive icon, and double click *Install* to run the installer.

Note: The Music Management CD also contains a software package (Yahoo! Music Engine) that can help transfer music content to your player. Please refer to the section on your installed software for detailed operations.

Note: Yahoo! Music Engine only works on Windows XP.

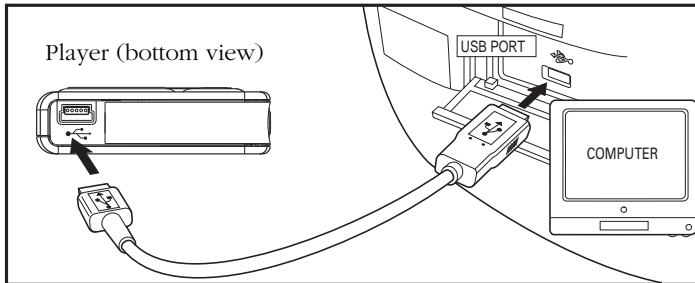
Connecting to the Computer

Connecting the Player to the Computer

Connect the digital audio player to your computer with the mini USB cable provided. The unit will turn on automatically. The player will appear as a Windows portable device (Windows XP) using the Media Transfer Protocol (MTP).

Note: It might take several seconds for the device to be detected. Click Refresh in My Computer or Explorer to make sure the device has been detected.

Note: The player is capable of transferring files at USB 2.0. If USB 2.0 port is available on your computer, use it to connect to your player. The player is still backward compatible with the older USB 1.1 ports. However, you will not be able to take full advantage of the potential speed increase.



Note: Windows XP requires Service Pack 1 or higher.

Charging the Battery

Your RCA digital audio player is charged through the USB connection when it is connected to your computer. To fully charge the player, make sure your computer is on and the device is connected for at least 3 hours.

Important Battery Information

- Charge the unit for at least 3 hours before first use.
- Charge the unit for at least 3 hours after putting away the unit for a long time.
- **Battery replacement should only be made by trained technicians. Refer to Limited Warranty for details.**
- Do not attempt to open the unit. No user serviceable parts inside.
- To reduce risk of injury, charge only rechargeable batteries recommended by the manufacturer for this product. Other types of batteries may burst causing damage and personal injury.

Caution

- The battery used in this device may present a risk of fire, explosion, or chemical burn if mistreated. Do not separately recharge, disassemble, or expose to high temperatures. Examples of high temperatures that may damage your product include leaving it in a locked car in the summer, or putting it on top of other heat generating electronic devices (such as power amplifiers and computer monitors).
- Do not place the battery under direct sunlight or in excessively hot places over 45°C (113°F) such as the dashboard of car.
- Dispose of used battery properly. Keep away from children. Do not disassemble and do not dispose of in fire.



Transferring Files to the Player

Transferring Files to the Player

You may select one of the methods to transfer music contents to your player: 1) Yahoo! Music Engine, 2) drag-and-drop via Windows Explorer. For method 1 and 2, you first need to have successfully installed the software packages included in the Music Management CD (refer to “Inserting the Included CD-ROM into CD-ROM Drive”).

Transferring Files via Yahoo! Music Engine - refer to page 15

Transferring files via Windows Explorer (drag-and-drop) - refer to page 17

Note: *Yahoo! Music Engine only works on Windows XP.*

Caution: *Secure music download files must be transferred to your player through the Yahoo Music Engine™ or the application recommended by your online music download service (Note: Services and applications must be Windows Media audio-compliant and support Digital Rights Management.) (Apple iTunes™ music content is not supported).*

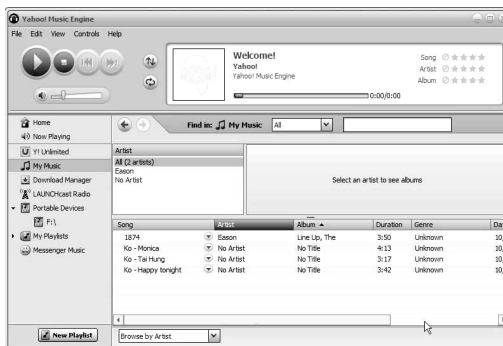
Note: Windows XP requires Service Pack 1 or higher.

Transferring Files via Yahoo! Music Engine (Windows XP only)

Yahoo! Music Engine lets you manage your music easily and organize like a pro. Create your own playlists: music for work, the gym, or even dinner. You can also buy download music and transfer to your player in seconds. Just drag and drop and you're done. For more information on the installation and operations, please visit: <http://music.yahoo.com/musicengine/>

Note: Do not disconnect the USB cable during music download. Doing so may corrupt system files or the files being downloaded.

Note: You must profile your contents after file transfer in order for the new files to appear in the Navigation Menus. Refer to section "Profile" (page 29).



1. Launch the *Yahoo! Music Engine*.
2. Attach the player to your computer. You should see the player's name appears in the left navigation pane.

Note: Windows XP requires Service Pack 1 or higher.

Note: Yahoo! Music Engine requires Internet Explorer 6 or above for installation.

Transferring Files to the Player

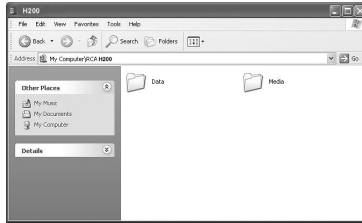
3. In the Yahoo! Music Engine, click *My Music* or click on a playlist on the left navigation pane.
4. From a playlist: at the bottom of the Yahoo! Music Engine window, click the *Transfer to Device* button. OR
5. From My Music: drag and drop files from *My Music* to the player. (You may also drag artists and albums from My Music).
6. The Yahoo! Music Engine will check to see if there is sufficient storage space on the device to copy the songs. If not, you will have to reduce the number of songs you are transferring.

Note: Windows XP requires Service Pack 1 or higher.

Transferring Files via Windows Explorer (Drag and Drop) (Windows XP only)

In the Windows Explorer, when the device is opened, the “Data” and “Media” views will be displayed for the device.

The *Data View* is used to manage data content on the device, such as text files. The *Media View* is used to manage media content supported by the device for playback, such as mp3 and wma.



You can copy files to / delete files from the device through Windows Explorer, but you cannot open or edit the files directly from the device. If you want to edit the files, you will need to copy the files from the device to another location (drive) in the system.

Note: Windows XP requires Service Pack 1 or higher.

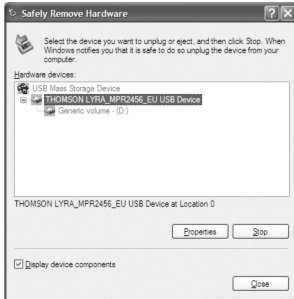
Note: You must profile your contents after file transfer in order for the new files to appear in the Navigation Menus. Refer to section “Profile” (page 29).


Caution: Secure music download files must be transferred to your player through one of the provided Jukebox software packages or any applications recommended by the online music download service. Please visit the online music download service’s website where you purchased your content from for more details on transferring secure music to your player.

Transferring Files to the Player

Disconnecting Your Player from the Computer

Note: Before disconnecting the USB cable from the computer or the player, be sure the “Safe to Remove Hardware” message is displayed.




1. For Windows XP, from the System Tray, double click the left mouse button on the icon  and select *Safely Remove Hardware*. Select the drive corresponding to your player and click *STOP*.



2. The *Stop a Hardware device* screen appears. Select the device to be stopped again for confirmation and click *OK*.



3. Before disconnecting the USB connection from the computer or the Digital AudioPlayer, be sure the “Safe to Remove Hardware” message is displayed.


Tip: You can also stop your player by left clicking on the  icon from the system tray and selecting the drive corresponding to your player.

Note: The description on this page is based on Windows XP. If you are running other operating systems, there may be some differences. See the Windows Help for details about safely removing hardware.

Before You Begin

The following example illustrates what you should do before operating your player.

1. These instructions presume you've already done the followings:
 - Installed all necessary applications.
 - Transferred music from your computer to the player.
 - Allowed your device to charge for at least 3 hours while connected to the computer.
2. If you haven't unplugged the player from your computer, detach the USB cable from the player, follow the procedure below.

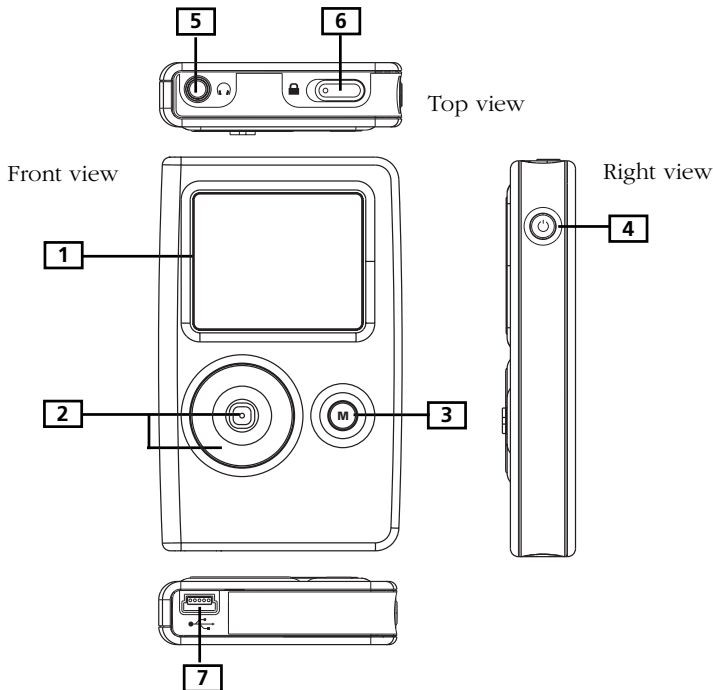
In Windows XP, you must stop the device before unplugging it. Click the  icon (the Unplug or Eject hardware icon) from the system tray and select the USB Mass Storage device for the drive associated with the player, and click STOP. See the Windows Help for details about the Unplug or Eject Hardware topic.

3. Connect the headphones to your player.
4. If your player isn't already on, turn it on by pressing and holding the **ON/OFF** button. The main navigation menu appears.

*Note: You can reset your player at any time if there is a problem by pressing and holding the **ON/OFF** button for 10 seconds.*

General Controls

Overview of General Controls



Front View

1. **LCD (Liquid Crystal Display)** - This is where the user interface appears.

Navigation Controls

2. **CONTROL** - For navigation control and various functions in different modes.

Audio navigation mode

Control joystick - Press once to play the highlighted item; or press and hold to select the item into My Selections.

UP - scroll up one item in list.

DOWN - scroll down one item in list.

RIGHT - go in one level.

LEFT - go back one level.

Control ring - Rotate clockwise to scroll down, rotate counterclockwise to scroll up.

Audio playback mode

Control joystick - Press once to pause the selected item; or press and hold to select the item into My Selections.

RIGHT - Press to skip to the next song, press and hold to search forward.

LEFT - Press to skip to the previous song, press and hold to search backward.

UP - Go to previous set of songs* (when the shuffle mode is not selected).

DOWN - Go to next set of songs* (when the shuffle mode is not selected).

Control ring - Rotate clockwise to increase volume, rotate counterclockwise to decrease volume.


* Set of songs include Artist, Album, Genres, Years, Playlists.

3. **M (Menu)** - Enter or exit menu.

Right View

4. **ON / OFF / STOP** - When the power is off, press and hold to turn on the unit; when the unit is in stop mode, press and hold to turn the power off. Press to stop playback when music is playing. Press and hold for longer than 10 seconds will reset the unit.

Top View

5. **Headphones jack** () - Insert the headphones plug here.
6. **HOLD** - Slide to activate or deactivate key lock.

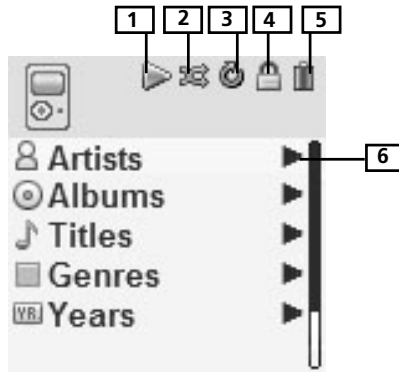
Bottom View

7. **USB port (to computer)** - Attach the small end (Type mini-B) of the mini-USB cable here. Attach the large end (Type A) to your computer. The unit will enter USB mode automatically, and you can transfer files to and from the computer.

The player will get power from the USB port when connected, the power draw from the USB port will only be enough to support data transfer.

General Controls

Navigation Display



1. This icon will change to show whether the device is playing or paused.
2. This icon will change to indicate the shuffle mode.
3. This icon will change to indicate the repeat mode.
4. The lock icon is displayed when the key lock function is activated. This can be activated by sliding HOLD to the left. To unlock, slide HOLD to the right.
5. This icon will show the battery level of the unit. When charging, the icon will animate.
6. Indicates that the item can be entered.

Music Playback Display



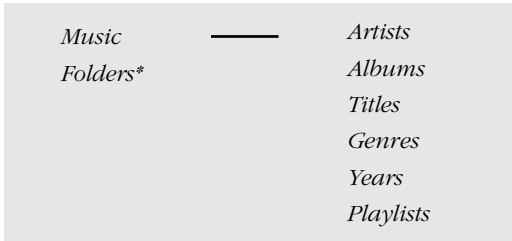
1. Current file number / total number of file
2. Song name
3. Singer name
4. Album name
5. Genre type
6. Elapsed playback time
7. Indicates whether the device is playing or paused.
8. Indicates the shuffle function is activated.
9. Indicates the repeat function is activated.
10. Indicates the lock function is activated.
11. Indicates the battery level of the player. When charging, the icon will animate.
12. File format (mp3 / wma)
13. File bit rate
14. Year of the file
15. Playback progress bar
16. File total duration

Note: The information provided in the playback screen depends upon the ID3 tags that have been set up for the song.

General Controls

The Navigation Menus

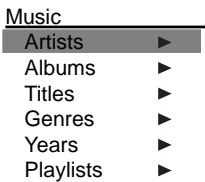
Music files are sorted according to several parameters for quick search of your favourite music. Once your player is turned on, you will see the file menus as below:



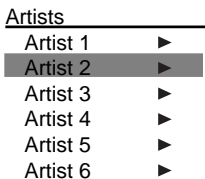
** Folders mode - Your player is also a USB mass storage device that can be used to store any files. You can view all files saved in the player in this mode.*

Selecting What You Want to Play

The following example illustrates steps to select and play songs in the *Artists* category.



1. Highlight *Artists* by rotating the **Control ring**.



2. Push the **Control joystick** to the right to enter the highlighted item (the *Artists* menu appears with the artists stored on your player listed in alphabetical order).
 - To scroll up and down the *Artists* menu, rotate the **Control ring**.
 - To return to the previous menu, push the **Control joystick** to the left.

Artist 2

All Songs

Album 1

Album 2

Album 3

Album 4

Album 5

3. To view the songs for the artist highlighted, push the **Control joystick** to the right to enter the highlighted item (the songs for that artist appear in alphabetical order).
 - To scroll up and down and view the list of songs for the selected artist, rotate the **Control ring**.
 - To return to the previous menu, push the **Control joystick** to the left.

***Note:** To show the option menu at any stage of navigation, press **M**.*

Album 2

All Songs

Song 1

Song 2

Song 3

Song 4

Song 5

4. Highlight the desired song.
 - To play the song, press the **Control joystick**.
 - Song's information will show on the display during playback.
 - To end playback, press the **Stop/On/Off** button, the display will return to the last screen you were in.
 - To return to the previous menu, push the **Control joystick** to the left.

***Note:** The information provided in the playback screen depends upon the ID3 tags that have been set up for the song.*

Tips: the item that you can select for playback does not limit to a single file, you may select an artist, an album, a playlist or a folder and then press the Control joystick to start playback of all files within your selected item.

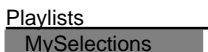
Adding Items to My Selections

You can select your favorite songs, albums, artists as *MySelections*.



- Highlight the desired song, artist, album, folder etc. by rotating the navigation control. Press and hold **the Control joystick** until “Added to My Sel” shows on the display. Repeat this step for selecting more items. You may select an item as *MySelections* as many times as you want, even if it has already been selected. If your selected item is an artist, an album etc., all files within will be selected as *MySelections*.

Saving MySelections as a Playlist



1. In navigation mode, push the **Control joystick** to move the cursor to *Playlists*.

2. When *MySelections* playlist is displayed, press **M** to enter the option menu.

3. Push the **Control joystick** to move the cursor to *Save as Playlist*. Press the **Control joystick** to enter.



Save MySelections
as:

Playlist1

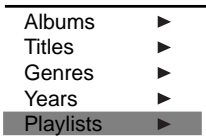
4. Press the **Control joystick** when you see this screen, the unit will use *Playlist 1* as the default setting. You can change the name of the playlist as you wish.

- Push the **Control joystick** to left and right to move the cursor.

- Rotate the **Control ring** to change the alphabet.

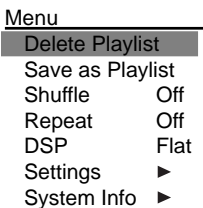
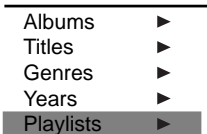
5. Press the **Control joystick** to save.

Viewing Playlists



1. In navigation mode, push the **Control joystick** to move the cursor to *Playlists*.
2. Push the **Control joystick** to the right to enter the *Playlists*.
3. Rotate the **Control ring** to scroll up and down the *Playlists* menu to select the desired playlist to be viewed.
4. Push the **Control joystick** to the right to view tagged items in the selected playlist.

Deleting Playlists



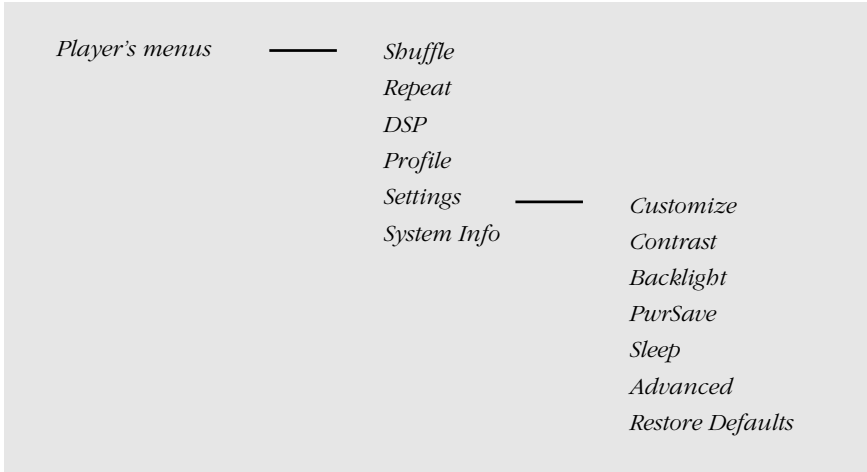
1. In navigation mode, rotate the **Control ring** to move the cursor to *Playlists*.
2. When *MySelections* playlist is displayed, push the **Control joystick** to move the cursor to go to the playlist you want to clear.
3. Press **M** to enter the option menu.
4. Rotate the **Control ring** to move the cursor to *Delete Playlist*, then press the **Control joystick** to confirm.

Player's Menu

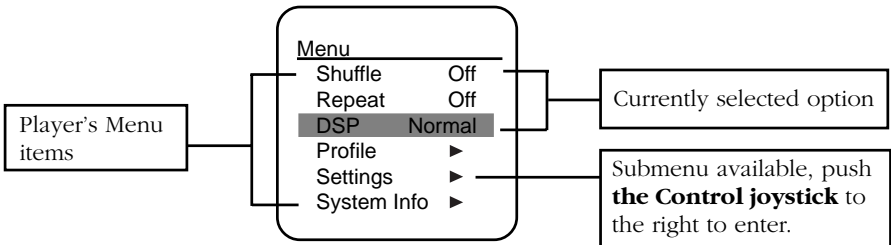
Accessing the Player's Menu

Press **M** in any mode to access the player's menu.

*Note: during playback **M** has to be pressed twice to display the player's menu.*



Navigation and Selection



1. To scroll up or down and highlight items on the screen, rotate **the Control ring**.
2. To enter and view the submenu, push **the Control joystick** to the right.
3. To go back to the previous menu level, push **the Control joystick** to the left.
4. Press **the Control joystick** repeatedly to select options.

Shuffle

Press **the Control joystick** repeatedly to select shuffle on or off. Files will be played randomly when shuffle is activated.

Repeat

Press **the Control joystick** repeatedly to select a repeat mode.

Repeat One - Repeat the current item

Repeat All - Repeat all items.

Repeat Off - Repeat is Off.

***Note:** Repeat and shuffle will work differently, depending your cursor is on a song or a set (albums, genres, etc.). You can select your desired combination of Shuffle and Repeat to suit you.*

DSP (Digital Signal Processor)

Press **the Control joystick** repeatedly to select a DSP mode. Options available: flat, rock, jazz, bass, pop and graphic. In graphic mode, you can customize the 5 band equalizer. Push **the Control joystick** to the right or left to select a band and rotate **the Control ring** to adjust band level.

Profile

You should profile and sort supported audio files on your player so that you can view in the navigation menus and play them properly. Press **the Control joystick** to start profiling.

Player's Menus

Settings

Press **the Control joystick** to enter the Settings menu and rotate **the Control ring** to select an item. Refer to the player for options available within each item. Press **the Control joystick** repeatedly to select settings.

Customize Menu: to customize the music menu to show and hide certain menu items.

Contrast: to adjust the display light contrast.

Backlight: to adjust the duration for the display backlight.

PwrSave (Power Save): to adjust the duration for automatic switch off when the player is idle.

Sleep: to adjust the duration of playback before automatic switch off.

Advanced: Protocol - to switch between MSC and MTP mode. (refer to Troubleshooting Tips for more information).

Restore Defaults: to reset all menus to factory defaults.

System Info

Press **the Control joystick** to show the amount of free space available and the firmware version.

Tips and Troubleshooting

Problem: Player repeats same tracks or all tracks.

- Repeat play is turned on. Press the **MENU** button (**m**) to change the play mode.

Problem: Audio distorted at high volume.

- Select another DSP setting.
- Turn down the volume.

Problem: The audio tracks on my player keep skipping or popping.

- You'll need to re-record the audio track – make sure you close all other applications on your PC when you record.
- Try recording with Error Correction setting turned on.

Problem: Player turns itself off.

- Your player turns itself off if you leave it in pause mode or navigation mode for the duration specified in PowerSave setting.

Problem: Songs aren't listed in any of the sort modes (Artist, Album, etc.)

- You may need to use the profiling options provided on the player to sort the songs again .

Problem: The harddisk is corrupted and need to be formatted.

- Format your unit by right-clicking on the drive letter or icon of your device and select **FORMAT**.
- Please go to <http://www.rca.com/digitalaudidownloads> for more details.

Problem: Player does not respond to key presses.

- If your player stops responding to key presses, you can reset it by pressing **ON/OFF** for more than 10 seconds. Most of your settings will be preserved; only the settings that you have changed after your last power off will be lost.
- This unit may temporarily cease to function if subjected to electrostatic disturbance. To resume normal operation, it may be necessary to cycle the power off and back on or you can reset it by pressing **ON/OFF** for more than 10 seconds.

Problem: Player cannot play WMA songs.

- Secure music download files must be transferred to your player through the Yahoo Music Engine™ or the application recommended by your online music download service (Note: Services and applications must be Windows Media audio-compliant and support Digital Rights Management.) (Apple iTunes™ music content is not supported).

Problem: The player takes a long time to read files in a folder or profile the contents.

- File reading and profiling may take longer if too many files are put in a single folder. Re-organize your files into a number of folders.

Additional Information

Problem: Cannot playback tracks on the player.

- Make sure audio tracks are encoded in the mp3 or Windows Media formats at supported bitrates.
Bitrates support by the player:
mp3 – 32 to 320 kbps
wma – 48 to 192 kbps
- WMA files may be DRM protected and you don't have the proper rights (license) to play the files.
- Check the website and/or application help system of the music download service provider from where the content was purchased from for license acquisition details. For more information on how license acquisition works, go to www.microsoft.com/windowsmedia/drm.

Problem: What are MTP and MSC modes?

- **MTP (Media Transfer Protocol)** mode is essential if you want to transfer **DRM content** to your player. In MTP mode your player will no longer show up as a drive letter. So programs that were designed to work with a device that shows up as a drive letter will not be able to work directly with the player. **MSC (Mass Storage Class)** mode is available only if you switch the device to MSC mode in advanced setting menu. Any device connected to the PC will show up as a drive letter.

Problem: It is slow to charge the battery through the PC.

- When connected to PC, press and hold **STOP** button to enter charging mode for faster charging.

What does the PlaysForSure logo mean?

- PlaysForSure is a new logo program from Microsoft®. Consumers can match the PlaysForSure logo on a large selection of devices and online music stores. If you see the logo, you'll know your digital media will play for sure.
- For more information on the Microsoft PlaysForSure program, visit www.PlaysForSure.com.
- For more information on RCA PlaysForSure devices, visit www.rca.com.

Check for Updates

Visit <http://www.rca.com/digitalaudioloads> for the latest news and firmware upgrades for our digital media player.

Specifications

Hardware

- Dimensions: 86 mm H, 51.5 mm W, 15 mm D
- Unit Weight: 85 g
- Stereo Headphones Jack
- Mini USB Connection Jack
- Battery Operated: Rechargeable lithium polymer battery.

Hard Drive

- External Hard Drive: When connected to a computer via USB, the player is capable of storing any file type allowing the user a fast, convenient method of storing, retrieving, and transferring files. This includes word processing files, presentations, spreadsheets and any other computer files.
- Capacity: H115/H125 - 5 GB
- Rotational Speed: 3600 RPM
- Connection: USB 2.0, Hi-speed capable

Software

- Includes the player applications and media management software.

Miscellaneous Specifications

- Signal to Noise Ratio (>85dB) A-weighted
- THD (<0.1%)

Limited Warranty (U.S.)

What your warranty covers:

- Defects in materials or workmanship.

For how long after your purchase:

- 90 days from date of purchase - Unit repair or exchange, which includes parts and labor.
- 91 days to 1 year from date of purchase - Unit repair or exchange, which includes parts only; you pay the labor.
- The warranty for rental units begins with the first rental or 45 days from date of shipment to the rental firm, whichever comes first.

What we will do:

- **During the initial 90 days:**
Repair or exchange the defective portion of your Hard Drive. If the unit is replaced it will be with a new or, at our option, refurbished unit.
- **After the 90 days and within one year:**
Repair or exchange the defective portion of your Hard Drive. If the unit is replaced it will be with a new or, at our option, refurbished unit.
We will charge you a flat rate to repair or replace a defective Hard Drive. This charge covers the labor cost for its repair.

Locating your Product's Serial Number

- Your serial number is located on the back of the unit.

How you get service:

- Contact us on the Internet at www.rca.com and have your unit's date of purchase and model/serial number ready. The model/serial number information is on your unit.
- Self diagnostic screens will allow you to troubleshoot your problem over the Internet.
- If after going through the troubleshooting screens, you determine that your player requires service, contact us at 1-866-449-7112. You must contact us to obtain a Service Request Number (SR) for a service repair or exchange. No returns will be accepted without the SR number.
- Proof of purchase in the form of a bill of sale or receipted invoice which is evidence that the product is within the warranty period must be presented to obtain warranty service. For rental firms, proof of first rental is also required.

- Write the SR number on the outside of the carton used to return the unit. Make sure you insure your shipment in case of damage or loss.
- Carefully pack the unit using the original box and packing material if possible. Please retain all non-defective accessories that were included with your unit such as the headphones.
- Include with the shipment:
 1. Evidence of purchase date such as a bill of sale.
 2. A brief note describing your unit's problem.
 3. Your name, address and phone number.
- After we receive your product, it will be repaired, or a new, or at our option, refurbished unit will be shipped to you.
- Please retain a copy of all items loaded into your Hard Drive. Thomson will not be responsible for your software, firmware, information, or memory data contained in, stored on, or integrated with any products returned to Thomson for repair or exchange whether in or out of warranty.

What your warranty does not cover:

- Acts of nature, such as but not limited to lightning damage.
- Adjustment of customer controls.
- Damage from misuse or neglect.
- A unit that has been modified or incorporated into other products or is used for institutional or other commercial purposes.
- Batteries.
- Units purchased, serviced or operated outside the U.S.A.
- Loss of customer's software, firmware, information, or memory data.
- Installation.
- Shipping damage if the unit was not packed and shipped in the manner prescribed by Thomson.

Product Registration:

- Please complete and mail the Product Registration Card packed with your Hard Drive. It will make it easier to contact you should it ever be necessary. The return of the card is not required for warranty coverage.

Additional Information

Limitation of Warranty:

- **THE WARRANTY STATED ABOVE IS THE ONLY WARRANTY APPLICABLE TO THIS PRODUCT. ALL OTHER WARRANTIES, EXPRESS OR IMPLIED (INCLUDING ALL IMPLIED WARRANTIES OF MERCHANTABILITY OR FITNESS FOR A PARTICULAR PURPOSE) ARE HEREBY DISCLAIMED. NO VERBAL OR WRITTEN INFORMATION GIVEN BY THOMSON INC., ITS AGENTS OR EMPLOYEES SHALL CREATE A WARRANTY OR IN ANY WAY INCREASE THE SCOPE OF THIS WARRANTY.**
- **REPAIR OR REPLACEMENT AS PROVIDED UNDER THIS WARRANTY IS THE EXCLUSIVE REMEDY OF THE CONSUMER. THOMSON INC. SHALL NOT BE LIABLE FOR INCIDENTAL OR CONSEQUENTIAL DAMAGES RESULTING FROM THE USE OF THIS PRODUCT OR ARISING OUT OF ANY BREACH OF ANY EXPRESS OR IMPLIED WARRANTY ON THIS PRODUCT. THIS DISCLAIMER OF WARRANTIES AND LIMITED WARRANTY ARE GOVERNED BY THE LAWS OF THE STATE OF INDIANA. EXCEPT TO THE EXTENT PROHIBITED BY APPLICABLE LAW, ANY IMPLIED WARRANTY OF MERCHANTABILITY OR FITNESS FOR A PARTICULAR PURPOSE ON THIS PRODUCT IS LIMITED TO THE APPLICABLE WARRANTY PERIOD SET FORTH ABOVE.**

How state law relates to warranty:

- Some states do not allow the exclusion nor limitation of incidental or consequential damages, or limitations on how long an implied warranty lasts, so the above limitations or exclusions may not apply to you.
- This warranty gives you specific legal rights, and you also may have other rights that vary from state to state.

If you purchased your product outside the United States:

- This warranty does not apply. See your dealer for warranty information.

Limited Warranty (Canada)

Thomson multimedia Ltd. warrants to the purchaser or gift recipient that if any manufacturing defect becomes apparent in this product within 1 year from the original date of purchase, it will be replaced free of charge, including return transportation.

This warranty does not include damage to the product resulting from accidents, misuse or leaking batteries.

Should your product not perform properly during the warranty period, either:

1. Return it to the selling dealer with proof of purchase for replacement,

OR

2. Remove the batteries (where applicable), and pack product complete with accessories in the original carton (or equivalent). Mail prepaid (with proof of purchase) and insured to:

Thomson multimedia Ltd.
6200 Edwards Blvd.,
Mississauga, Ontario L5T 2V7
Canada

The provisions of this written warranty are in addition to and not a modification of or subtraction from the statutory warranties and other rights and remedies contained in any applicable legislation, and to the extent that any such provisions purport to disclaim, exclude or limit any such statutory warranties and other rights and remedies, such provisions shall be deemed to be amended to the extent necessary to comply therewith.

If you are unable to find a qualified servicer for out of warranty service, you may write to:

Thomson Inc.
P.O. Box 0944
Indianapolis, Indiana, U.S.A., 46206-0944

Attach your sales receipt to this booklet for future reference. This information is required if service is needed during the warranty period.

PURCHASE DATE

NAME OF STORE

Additional Information

visit us at www.rca.com

Please do not send any products to the Indianapolis address listed in this manual or on the carton. This will only add delays in service for your product.

Importador

Comercializadora Thomson de México, S.A. de C.V.

Álvaro Obregón No. 151. Piso 13.

Col. Roma. Delegación Cuauhtémoc

C.P. 06700. México, D.F.

Telefono: 52-55-11-020360

RFC: CTM-980723-KS5

EXPORTER

Thomson Inc.

P.O. Box 1976

Indianapolis, IN 46206-1976

©2006 Thomson Inc.

Trademark(s)® Registered

Marca(s) Registrada(s)

www.rca.com

v3.0